

## EXLAR® ELECTRIC ACTUATORS

Intelligent • Integrated • Universal

What makes it an Exlar® actuator? Exlar actuators from Curtiss-Wright have a **PROVEN** history of quality and legendary reliability. The Exlar drive technology offers a compact **POWER**-dense electromechanical actuator solution that can be controlled with **PRECISION** due to its advanced servomotor roller screw design and 3<sup>rd</sup> party drive flexibility.

Exlar® actuation products range from simple servomotors to Ethernet-enabled smart actuators that can withstand the most rugged environments. Our innovative actuator solutions solve your most difficult manufacturing challenges, with our newest actuators offering even more force and functionality than before.



### INTELLIGENT — DRIVE | MOTOR | ACTUATOR

#### TRITEX® Intelligent Actuator Platforms

**TTX Series** — Decentralized, Industrial Ethernet Communications

Model	Frame Size mm (in)	Peak Force N (lbf)	Cont. Force N (lbf)	Max Speed mm/s (in/s)
<b>TTX060</b>	60 (2.36)	DC - 4,618 (1,038)	DC - 2,566 (552)	DC - 847 (33)
<b>TTX080</b>	80 (3.15)	AC - 11,800 (2,650) DC - 9,940 (2,270)	AC - 5,900 (1,325) DC - 4,970 (1,115)	AC - 635 (25) DC - 508 (20)



### INTEGRATED — MOTOR | ACTUATOR

#### EXLAR® Inverted Roller Screw Servo Actuators

**GTX Series** — Industry-Leading Exlar Integrated Automation

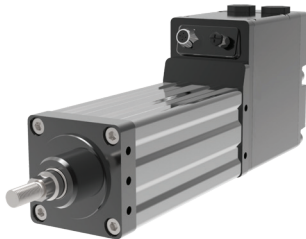
Model	Frame Size mm (in)	Peak Force N (lbf)	Cont. Force N (lbf)	Max Speed mm/s (in/s)
<b>GTX060</b>	60 (2.36)	AC - 5,336 (1200) DC - 5,336 (1200)	AC - 2,668 (600) DC - 2,668 (600)	AC - 1,270 (50.0) DC - 847 (33.3)
<b>GTX080</b>	80 (3.15)	AC - 16,730 (3,762) DC - 14,202 (3,192)	AC - 8,365 (1,881) DC - 7,101 (1,596)	AC - 1,270 (50.0) DC - 508 (20.0)
<b>GTX100</b>	100 (3.90)	AC - 30,784 (6,920)	AC - 15,392 (3,460)	AC - 953 (37.5)

**GTW Series** — Automotive Weld-Gun Applications

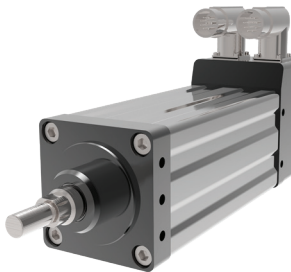
Model	Frame Size mm (in)	Peak Force N (lbf)	Cont. Force N (lbf)	Max Speed mm/s (in/s)
<b>GTW080</b>	80 (3.15)	AC - 16,730 (3,762)	AC - 8,365 (1,881)	AC - 1,270 (50.0)
<b>GTW100</b>	100 (3.94)	AC - 30,784 (6,920)	AC - 15,392 (3,460)	AC - 953 (37.5)



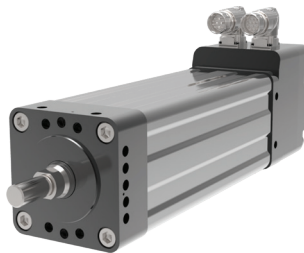
Tritex® TTX Product Page



GTX Product Page



GTW Product Page





### UNIVERSAL — ACTUATOR

#### High Force Roller Screw Actuators

**FTP Series** — Optimized for Pressing Applications  
*(for use with a variety of gearboxes)*

Model	Frame Size mm (in)	Strokes mm (in)	Max Cont. Force kN (lbf)	Max Speed mm/s (in/s)
<b>FTP160</b>	160 (6.3)	150 (6), 300 (12), 600 (24), 900 (36)	200 (45,000) 22.5 tf (pressing)	401 (15.8)
<b>FTP215</b>	215 (8.5)	150 (6), 300 (12), 600 (24)	355 (80,000) 40 tf (pressing)	351 (13.8)

**FTX Series** — Hydraulic Cylinder Replacement Applications  
*(for use with a variety of motors and gearboxes)*

Model	Frame Size mm (in)	Strokes mm (in)	Max Cont. Force kN (lbf)	Max Speed mm/s (in/s)
<b>FTX095</b>	95 (3.7)	150 (6), 300 (12), 600 (24), 900 (36), 1200 (48)	22 (5,000)	1,500 (59.3)
<b>FTX125</b>	125 (5.0)		44 (10,000)	583 (23.0)
<b>FTX160</b>	160 (6.3)		89 (20,000)	1,000 (39.0)
<b>FTX215</b>	215 (8.5)		178 (40,000)	875 (34.0)

**KX Series** — Pneumatic Cylinder Replacement Applications  
*(for use with a variety of motors and gearboxes)*

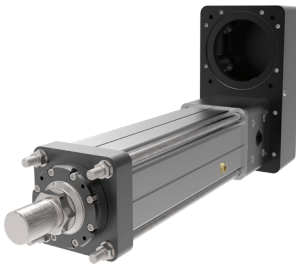
Model	Frame Size mm (in)	Stroke mm (in)	Max Cont. Force kN (lbf)	Max Speed mm/s (in/s)
<b>KX60</b>	60 (2.36)	150 (6), 300 (12), 600 (24), 900 (36)	6 (1,350)	833 (32.8)
<b>KX75</b>	75 (2.95)		11.1 (2,500)	666 (26.2)
<b>KX90</b>	90 (3.54)		15.6 (3,500)	500 (19.7)



FTP Product Page



FTX Product Page



KX Product Page



This overview provides a summary of Exlar products. Complete descriptions, specifications, and drawings available at [www.exlar.com](http://www.exlar.com).

## Who We Are

Exlar® manufactures electromechanical linear roller screw actuators, rotary servomotors, and integrated control solutions for a broad range of applications. Our unique technology provides an efficient electric replacement for hydraulic or pneumatic cylinders and a more robust replacement for ball screws.

With forces up to 80,000 pounds and speeds up to 60 inches per second, we are able to deliver higher force and speed in smaller packages than other comparably sized actuation technology. Exlar actuators have more flexibility, higher efficiency, and lower maintenance than traditional hydraulic and pneumatic solutions.

Whether looking to increase productivity or reduce your total cost of ownership, Exlar's team of highly skilled engineers can put together the right solution for you.

Go to [www.Exlar.com](http://www.Exlar.com) to download automation resources.



Exlar® Automation is a brand of the Curtiss-Wright Actuation Division.



*Inverted Roller Screw*  
**Changing the game**  
for over 30 years!