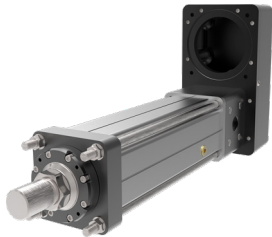


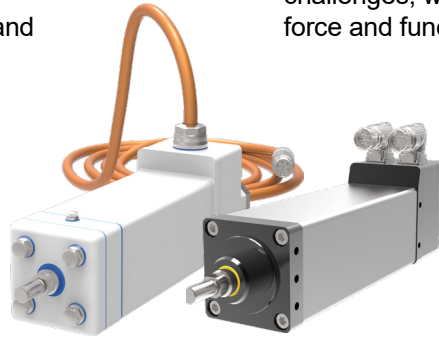
PRODUCT OVERVIEW

What makes it an Exlar[®] actuator? Exlar actuators from Curtiss-Wright have a **PROVEN** history of quality and legendary reliability. The Exlar technology offers a compact **POWER**-dense electromechanical actuator solution that can be controlled with **PRECISION** due to its advanced servomotor roller screw design and 3rd party drive flexibility.

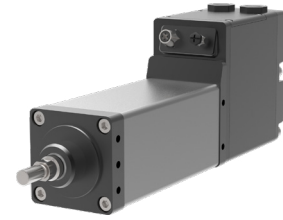
Exlar[®] actuation products range from simple servomotors to Ethernet-enabled smart actuators that can withstand the most rugged environments. Our innovative actuator solutions solve your most difficult manufacturing challenges, with our newest actuators offering even more force and functionality than before.



Universal Products



Integrated Products



Intelligent Products

UNIVERSAL PRODUCTS — ACTUATOR

High-Force Roller Screw Actuators

FTP — Optimized for Pressing Applications *(for use with a variety of gearboxes)*

Model	Frame Size mm (in)	Stroke Length mm (in)	Max Cont. Force kN (lbf)	Max Speed mm/s (in/s)
FTP160	160 (6.3)	150, 300, 600, 900 (6, 12, 24, 36)	200 (45,000) 22.5 tf (pressing)	401 (15.8)
FTP215	215 (8.5)	150, 300, 600 (6, 12, 24)	355 (80,000) 40 tf (pressing)	351 (13.8)



FTX — Replacement for Hydraulic Cylinders *(for use with a variety of motors and gearboxes)*

Model	Frame Size mm (in)	Stroke Length mm (in)	Max Cont. Force kN (lbf)	Max Speed mm/s (in/s)
FTX095	95 (3.7)	150, 300, 600, 900, 1200 (6, 12, 24, 36, 48)	22 (5,000)	1,500 (59.3)
FTX125	125 (5.0)		44 (10,000)	583 (23.0)
FTX160	160 (6.3)		89 (20,000)	1,000 (39.0)
FTX215	215 (8.5)		178 (40,000)	875 (34.0)



KX — Replacement for Pneumatic Cylinders *(for use with a variety of motors and gearboxes)*

Model	Frame Size mm (in)	Stroke Length mm (in)	Max Cont. Force kN (lbf)	Max Speed mm/s (in/s)
KX60	60 (2.36)	150, 300, 600, 900 (6, 12, 24, 36)	6 (1,350)	833 (32.8)
KX75	75 (2.95)		11.1 (2,500)	666 (26.2)
KX90	90 (3.54)		15.6 (3,500)	500 (19.7)



INTEGRATED PRODUCTS — MOTOR | ACTUATOR

EXLAR® Inverted Roller Screw Servo Actuators

GTX — Industry-Leading Exlar Integrated Automation



Model	Frame Size mm (in)	Stroke Length mm (in)	Peak Force N (lbf)	Cont. Force N (lbf)	Max Speed mm/s (in/s)
GTX060	60 (2.36)	80, 150, 300 (3.15, 5.9, 11.8)	AC - 5,336 (1200) DC - 5,336 (1200)	AC - 2,668 (600) DC - 2,668 (600)	AC - 1,270 (50.0) DC - 847 (33.3)
GTX080	80 (3.15)	100, 150, 300, 450 (3.9, 5.9, 11.8, 17.7)	AC - 16,730 (3,762) DC - 14,202 (3,192)	AC - 8,365 (1,881) DC - 7,101 (1,596)	AC - 1,270 (50.0) DC - 508 (20.0)
GTX100	100 (3.90)	150, 300 (5.9, 11.8)	AC - 30,784 (6,920)	AC - 15,392 (3,460)	AC - 953 (37.5)

GTW — Automotive Weld-Gun Applications



Model	Frame Size mm (in)	Stroke Length mm (in)	Peak Force N (lbf)	Cont. Force N (lbf)	Max Speed mm/s (in/s)
GTW080	80 (3.15)	150, 300 (5.9, 11.8)	AC - 16,730 (3,762)	AC - 8,365 (1,881)	AC - 1,270 (50.0)
GTW100	100 (3.94)		AC - 30,784 (6,920)	AC - 15,392 (3,460)	AC - 953 (37.5)

GTF — Food & Beverage / Packaging Applications



Model	Frame Size mm (in)	Stroke Length mm (in)	Peak Force N (lbf)	Cont. Force N (lbf)	Max Speed mm/s (in/s)
GTF060	60 (2.36)	80, 150, 300 (3.15, 5.9, 11.8)	AC - 5,336 (1200)	AC - 2,668 (600)	AC - 1,270 (50.0)
GTF080	80 (3.15)	100, 150, 300, 450 (3.9, 5.9, 11.8, 17.7)	AC - 16,730 (3,762)	AC - 8,365 (1,881)	AC - 1,270 (50.0)
GTF100	100 (3.90)	150, 300 (5.9, 11.8)	AC - 30,784 (6,920)	AC - 15,392 (3,460)	AC - 953 (37.5)

INTELLIGENT PRODUCTS — DRIVE | MOTOR | ACTUATOR

TRITEX® Intelligent Actuator Platforms

TTX — Decentralized, Industrial Ethernet Communications



Model	Frame Size mm (in)	Stroke Length mm (in)	Peak Force N (lbf)	Cont. Force N (lbf)	Max Speed mm/s (in/s)
TTX060	60 (2.36)	80, 150, 300 (3.15, 5.9, 11.8)	DC - 4,618 (1,038)	DC - 2,566 (552)	DC - 847 (33)
TTX080	80 (3.15)		AC - 11,800 (2,650) DC - 9,940 (2,270)	AC - 5,900 (1,325) DC - 4,970 (1,115)	AC - 635 (25) DC - 508 (20)

This overview provides a summary of Exlar products. Complete descriptions, specifications, and drawings available at www.exlar.com.

Exlar® is a brand of the Curtiss-Wright Actuation Division.